



EDINBURGH
STEINER
SCHOOL

The
Growing Spaces
project

Contact us

Rachel Craig
Project Manager
rachel.craig@edinburghsteinerschool.org.uk

Project partners

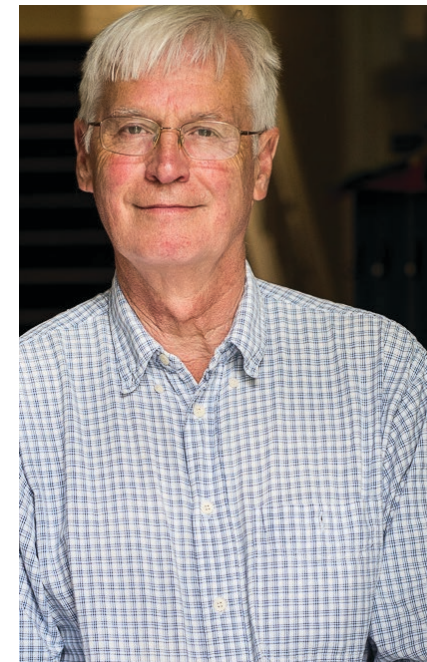
Benjamin Tindall Architects
17 Victoria Terrace
Edinburgh EH1 2JL
www.benjamintindallarchitects.co.uk

Morham & Brotchie Limited
126 Calton Road
Edinburgh EH8 8QJ
www.mb-qs.com

Max Fordham
3 Semple Street
Edinburgh EH3 8BL
www.maxfordham.com

Burnt Siena Structures
25 Findhorn Place
Edinburgh EH9 2NT
www.burntsienastructures.com

Growing Spaces, going places



Edinburgh Steiner School aspires to develop responsible, creative and freethinking young people, who will contribute to society and a sustainable environment with vision and purpose. We're very proud of the many pupils who have benefited from their education here, and gone on to take up their place in society and make careers in fields as diverse as environmental science and architecture and design. We hope to continue to provide an important alternative to mainstream independent education in Edinburgh, but to do so our pupils and staff need appropriate spaces to learn, work, play and grow.

It may take ten years to achieve our vision - but we are pleased to have made a start. We hope you will support us as we undertake this ambitious project.

Gerald Johnson
Chair of the Board of Trustees
gerald.johnson@edinburghsteinerschool.org.uk

The project team



Rachel Craig
Project Manager



Juan Carlos Soto
Finance Steering Group



Tom Moore
Finance Steering Group



Roshini Dubey
Fundraising Steering Group

Why are we developing?

- There is a lack of space for the growing school
- It's about improving the students' lives
- Excellence can be achieved by creating inspirational spaces to learn in
- To create a sustainable school for the future

What is our vision?

- 12 full classrooms of 25
- Improvements to Kindergarten
- Secure entrance
- Bringing the villas up-to-date
- Expanded Music and Drama space
- Dedicated dining room space
- New therapy room

Our new campus

General

The plan on the previous page shows a 'completed' state which gives a framework to plan work within. It is envisaged that ideas will develop with changing circumstances and it is inevitable that in the future the plan will need to be adapted.

Entrance

A new secure entrance area **1** is proposed, signalled by a 'Lych' gate where pupils, parents and staff can meet. The gate might be designed in detail by the pupils and maybe made from trees on the site. There is space for some accessible parking and access for emergency services. This area can also act as a welcome for the public and sets a tone for the campus as a whole.

Classrooms

A general progression from Craigneen to with toddlers to the Kindergarten **2**, Woodland **3** and Edinholme **4** with the senior school is envisaged. Rearrangements allow for

Classes 9–12 in Edinholme in a manner that restores some of the character of these fine villas and restores some of the character of these fine villas and enhances their energy performance. Achieving this with minimal disruption requires some juggling around and additional accommodation at Avalon and the Coach Houses.

Other facilities

The provision of extra accommodation for science and new accommodation for arts and crafts can be achieved, in the longer term, with alterations and extensions to the Coach Houses **5** and Avalon **6**. A communal dining room can be provided with an extension to the rear of Woodlands **7**, though it may be needed as classroom in the interim. Improvements to the Hall with a Music & Drama room **8** and a Foyer space **9** will make it easier for the Hall to be used by outside groups and provide a new focus to the campus. A new Therapy Room **10** frees up other accommo-

dation. Extensions to the Kindergarten **11** allow for extra pupils, an important component for the school's future.

Trees

The existing trees relate to former boundaries and have been augmented over the years to a degree that they now cast considerable shade over the site. It is proposed they are made safe, gradually replanted and trimmed to a plan agreed with the Council that will let in more sunlight. It is suggested that perhaps the new trees relate the days of the week and be labelled with their numbers, botanical and English names and associations, as an educational resource.

Gardens

Additional sunlight gives the opportunity for additional gardening, proposed in front of Avalon **12** and Woodlands **13**, in raised beds of flowers and vegetables in a manner that allows for teaching.

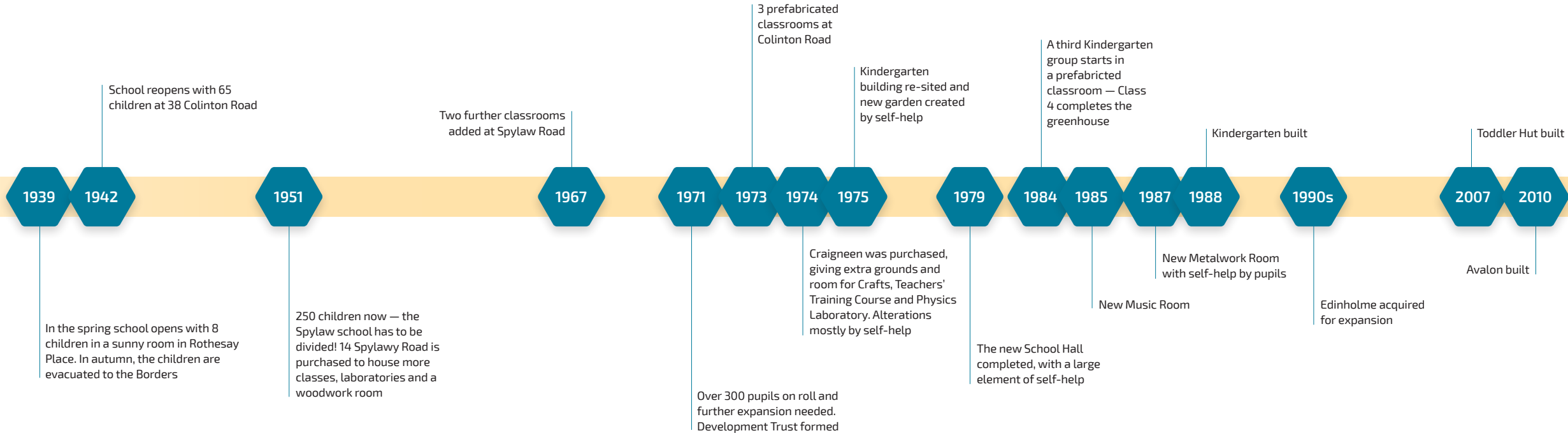


The history of our site

Spylaw Road was developed in the 1870s as an attractive relatively central and smoke free suburb with large houses. Edinholme and Woodlands had entrances next to each other and soon after they acquired their own coach house and stables.

The site behind on Polwarth Terrace was vacant until later when the Craigneen Villa was constructed. The landscape as seen on the historical ordinance survey drawing shows trees planted along the boundaries of the sites.

In 1981 Edinholme and its stables (coach houses) became listed buildings, given a C listing. The whole site is in a conservation area.



The origins of Steiner

Rudolf Joseph Lorenz Steiner 1861-1925 was an Austrian philosopher, social reformer and importantly an architect. Steiner designed 17 buildings, including the First and Second Goetheanums. These two buildings, built in Dornach, Switzerland, were intended to house significant theatre spaces as well as a school for spiritual science. Three of Steiner's buildings have been listed amongst the most significant works of modern architecture.

The first school based upon Steiner's ideas was opened in 1919 in response to a request by Emil Molt, the owner and managing director of the Waldorf-Astoria Cigarette Company in Stuttgart, Germany, to serve the children of employees of the factory. The school grew in popularity and soon the majority of pupils were from families not connected directly with the company. The co-educational school was the first comprehensive school in Germany, serving children from all social classes, genders, abilities, and interests.



Our architectural approach



Benjamin Tindall Architects has over 30 years of experience, from Masterplanning new settlements to Conservation Plans, new buildings, interventions, repairs and exhibitions to furniture design. All this is done with an emphasis on environmental, economic and social sustainability. Projects include Jupiter Artland at Bonnington House, the east gate at the Edinburgh Botanic Gardens, and the Queen's Gallery.

They designed the existing Kindergarten at Edinburgh Steiner School in 1988.

Their designs draw inspiration from Steiner's teachings and the Goetheanum, as well as Steiner schools worldwide. They are greatly attracted by the sensitivity required and the importance Steiner gives to good design, along with the participation of staff, pupils and parents. Steiner schools have a remarkable and consistent ethos. Each room follows a standard pattern of being an encompassing space with a good quality of light.

The design principles

Let in the light

Light is fundamentally important for people as well as nature, not only in buildings but also in the grounds. As trees mature the grounds are becoming increasingly shaded.

Flexibility year to year

The needs of the school are constantly evolving with the changing nature of the outside world. Designing for flexibility of spaces allows the school to develop and change as well as allowing classrooms and other spaces to be used in different ways. This helps the programme considerably.

Building on the boundary to maximise the use of the site

Building on the boundary allows the site to be optimised and removes the awkward left over spaces usually created at the boundaries. Building on the boundaries focuses the attention inward and maximises the site for new landscape and play areas. It increases the apparent size of the site.

Works are done to long-term quality, to a standard that pupils, parents and teachers can adopt

Building quality structures saves costs over the lifetime of the building. When the users of the buildings can invest in the design process they grow to appreciate the spaces and ensure that they are well maintained.

New buildings in the Steiner style

New buildings will follow the Steiner spirit and become part of the teaching process. Every opportunity is taken to create practical spaces with good detailing.

Villas to be respected and made the most of with any extensions to the rear

The site is in a Conservation Area and listed building consents are required for any alterations. The Victorian villas give a distinctive character to the Edinburgh Steiner School. By extending the villas only to the rear the main facades maintain their original design intentions. Likewise, maintaining the internal finishes, eg plaster cornices, is important.

Front doors to be a welcoming and secure entrance

A clear, welcoming and secure site entrance to the school is essential. Likewise buildings need good entrances. The villas should be entered by their front doors.

Landscape strategy is to increase light at ground level

A phased approach to letting in more light will help increase the areas that can be used of gardening and teaching. The replacement of some trees with smaller trees will also increase the light and give opportunities for extending the range and variety of trees on the site.

Nothing is temporary

Temporary building is seldom successful and postpone the construction of new buildings that last.

Storage

The rationalised of storage will reduce the amount of construction required and save funds. Efficient storage is easily accessible. New regulations require that information be stored safely and securely.

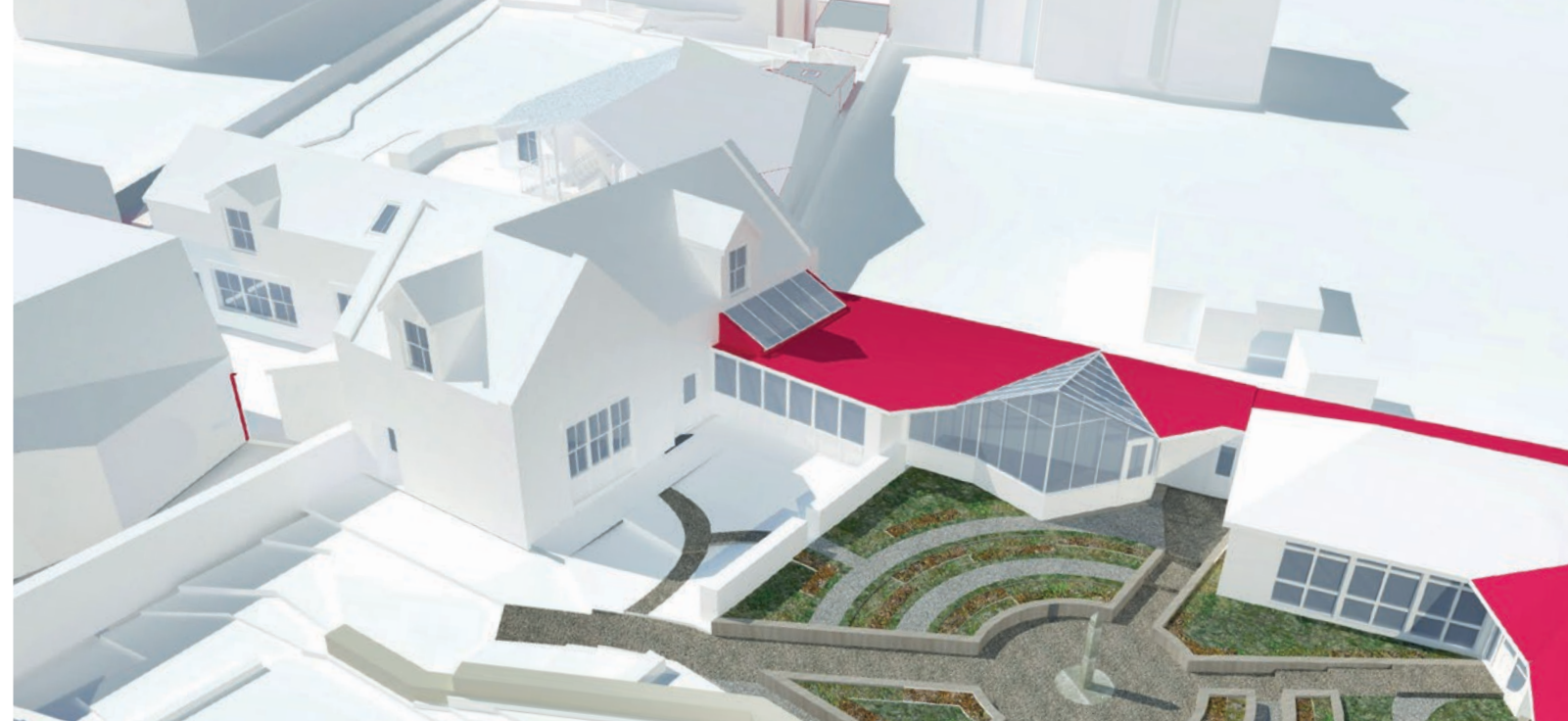
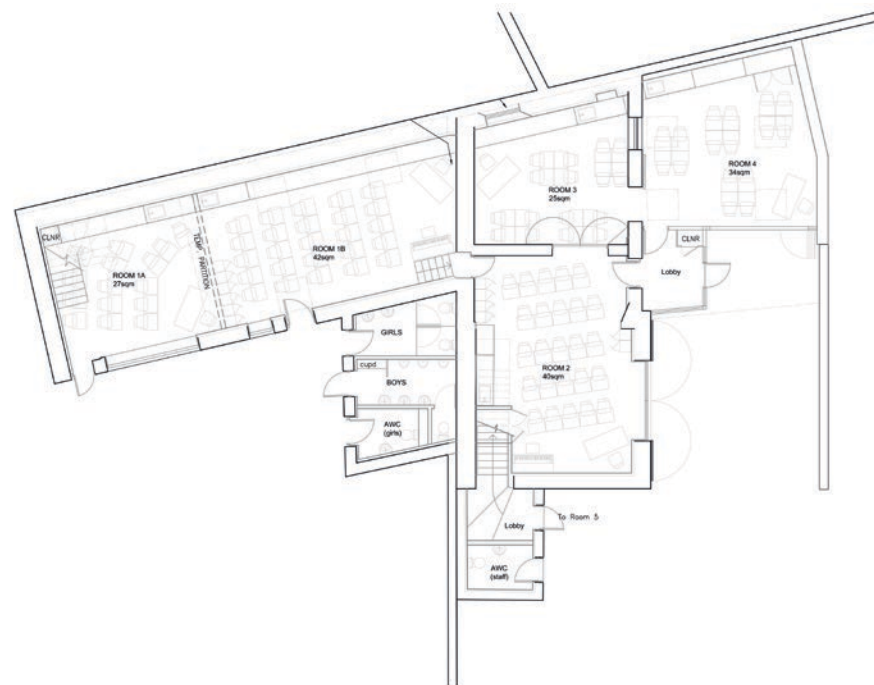


Phase 1 of the Growing Spaces Project

Coach Houses – Arts & Crafts

The first phase is the improvement and renewal of the coach houses to provide 2 new full size class-rooms and 2 smaller classes for art. The goal is to improve the comfort and energy efficiency of the coach houses by:

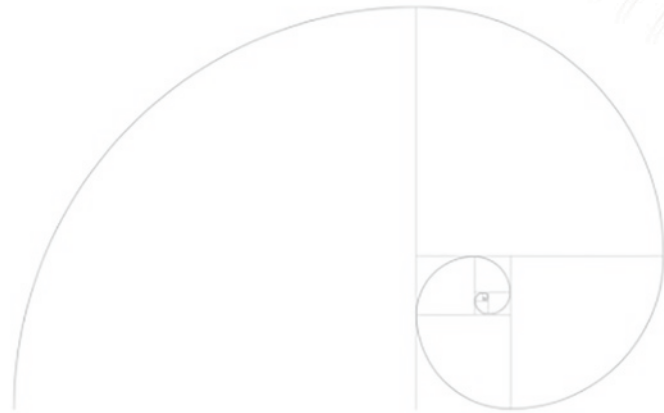
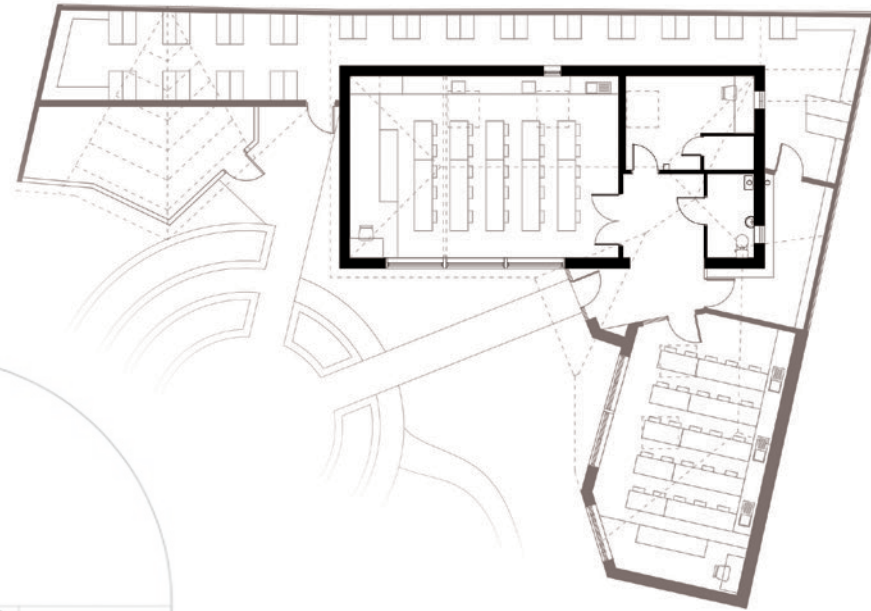
- relining of walls and new wall insulation
- roof insulation
- new electrics and lighting
- new sanitary facilities
- re-pointing of walls
- double glazed windows
- repair rainwater goods
- new boiler / heating
- improved ventilation / heat recovery



Avalon – Science

The second phase consists of a new science class room, chemical storage and general storage facilities for desks, chairs, props and costumes (currently in the coach house). A green house is proposed as a later phase.

The classroom will have the facilities to replace the existing chemistry classroom in the woodlands coach house.

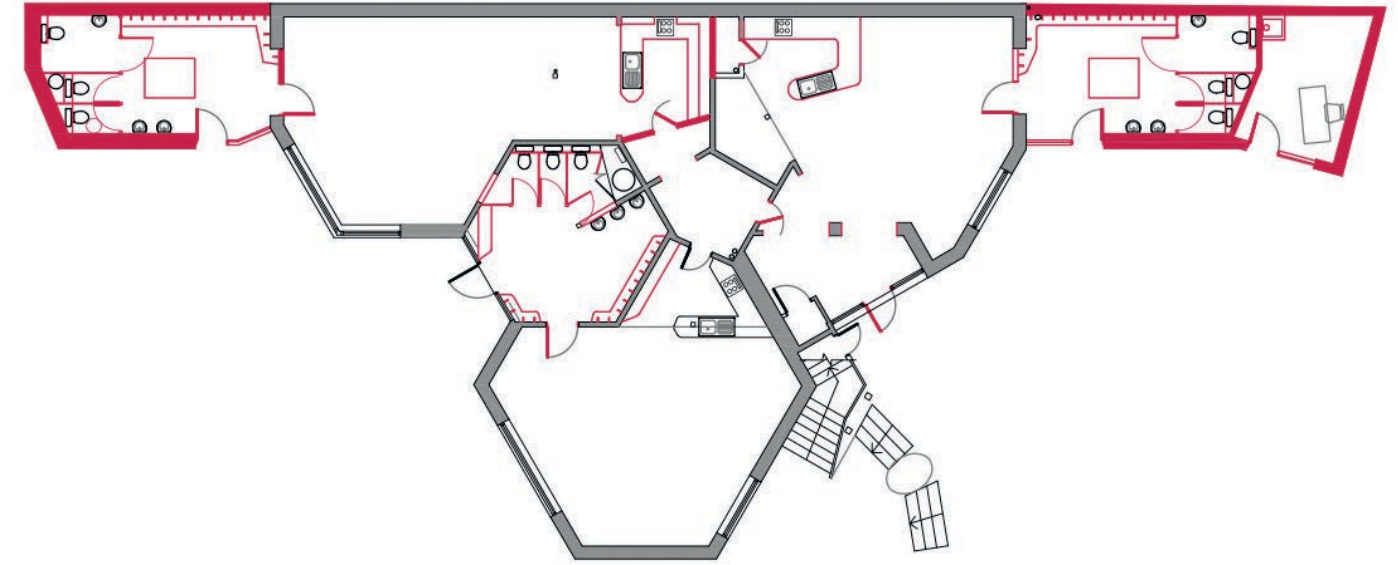


Kindergarten

The original Kindergarten was completed in 1988. Expanding the Kindergarten to 60 pupils will allow a larger catchment of students to filter up through the school years. The 2 new wings creates a warm and friendly entrance and allows for each classroom to have a dedicated entrance with a storage area for bags, jackets and boots.

The relocation of the toilet facilities and additional accessible toilets brings the structure up to current building standards for sanitary facilities and accessibility. Moving the toilets has increased the size of the classrooms and is designed so that the teaching staff can monitor all parts for the room from the kitchen.

A new office room is created in the garden as a separate office space for Kindergarten staff to meet with parents detached from the classroom environment.





Fundraising for *Growing Spaces*

The School will be developing a range of fundraising opportunities to support *The Growing Spaces Project* over the next few years.

We appeal to parents and friends of the School to get involved and support our fundraising through participation, donations and spreading the word.

Further details will be shared over the next few months, but if you wish to get in touch, please email:

fundraising@edinburghsteinerschool.org.uk

Fundraising and sponsored events at the school

Crowdfunding

Partnership work — other Waldorf Steiner schools and anthroposophical societies

Grants — applications to foundations, Lottery, local and international grant providers

The project team



We aspire to develop responsible, creative and freethinking young people, who will contribute to society and a sustainable environment with vision and purpose.



You can support the Growing Spaces Project by signing up to our Amazon Smile account, after which we'll receive a small donation for every purchase you make. Just go to smile.amazon.co.uk and search for 'Edinburgh Steiner School'.



EDINBURGH
STEINER
SCHOOL

www.edinburghsteinerschool.org.uk
growingspaces@edinburghsteinerschool.org.uk